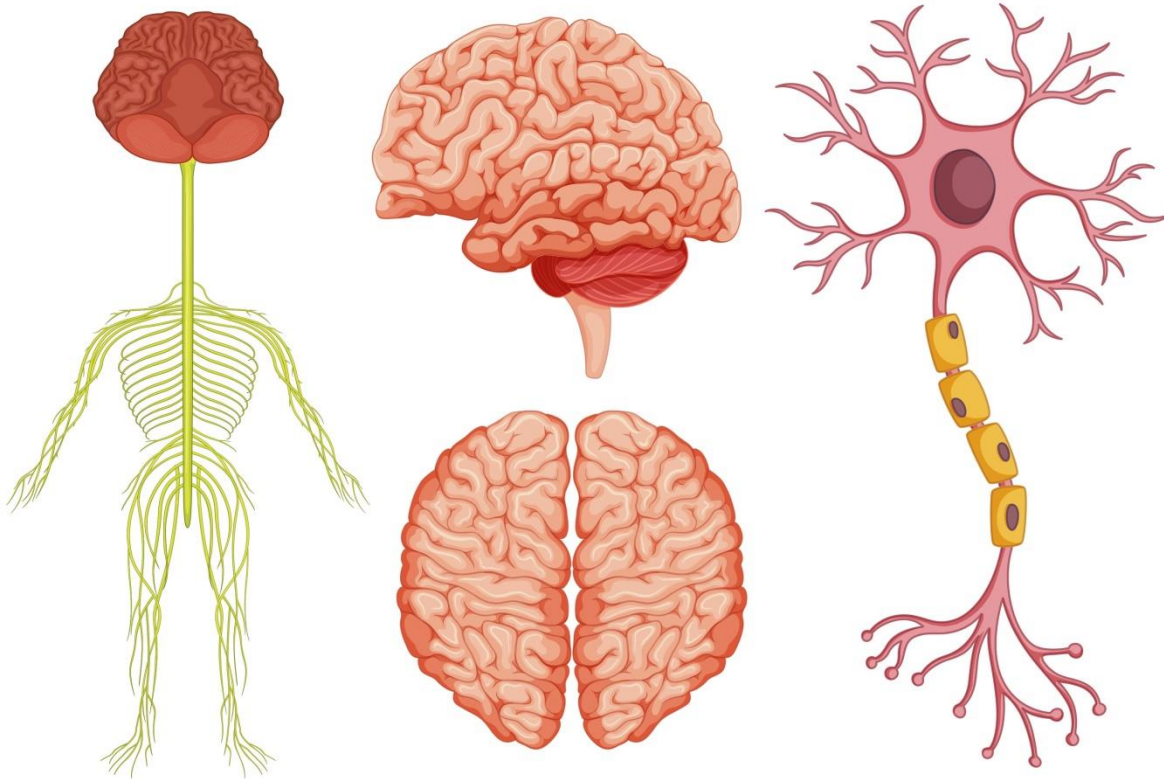


Inquiry Question**How does the human nervous system work?****Name:** _____**Date:** _____

The survival of organisms depends on their ability to sense and respond to stimuli in their environment. Sense organs of the body take in information from an organism's surroundings and send them to the brain. The network of cells that make up the nervous system are called nerve cells or neurons. There are several hundred billion nerve cells in the human body.

There are two major divisions of the nervous system: the central nervous system and the peripheral nervous system. The central nervous system includes the brain and spinal cord. The peripheral nervous system is composed of the nerves which branch out from these.

In this project you will research the human nervous system and create a diagram labelling and describing the various functions of the nervous system. You will also look further into the system by creating a series of questions that you would like to find out about the nervous system. This will end up in a short report based upon your inquiry.

General Instructions

The goal of this project is to learn about the human nervous system.

Materials you'll need:

- internet for research
- paper
- coloured pencils
- pencil

Ideas and Hints:

- Research the human nervous system looking at the structure and function of the entire system.
- Draw a diagram labelling the various components of the nervous system.
- Ask yourself a question about the structure, development, function, requirements, and/or environment of one or more component of the nervous system and find the answer, if possible. Support your answer with facts and list the source of those facts.
- Use the answer to ask at least three more questions. Determine the answers to each of those questions.
- For each new answer ask at least three new questions and find those answers.
- Your inquiry will be complete once you have asked and answered ten questions based upon your initial question.
- Write a report based on your inquiry into the nervous system using your questions and answers to guide you.

Project submission:

Once you have completed your diagram and report, assemble them into a single file and upload it to the Biology project drop-box.